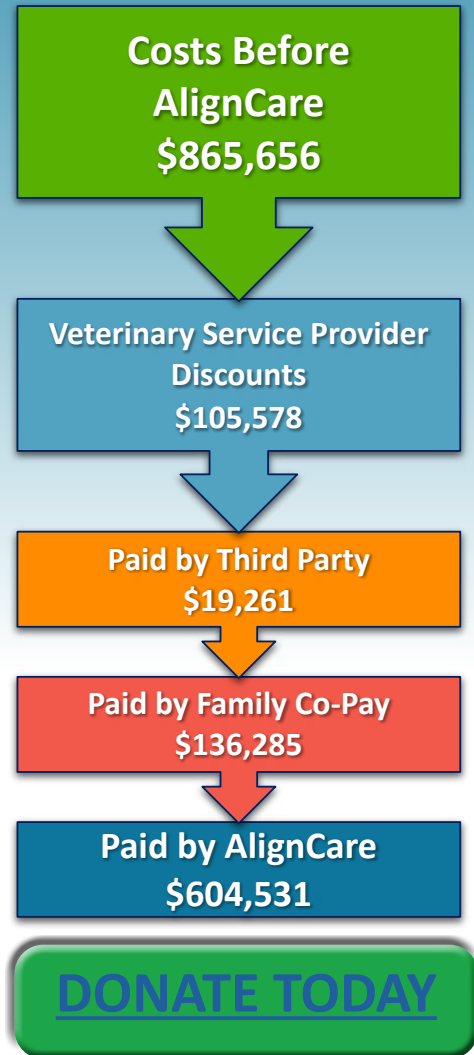
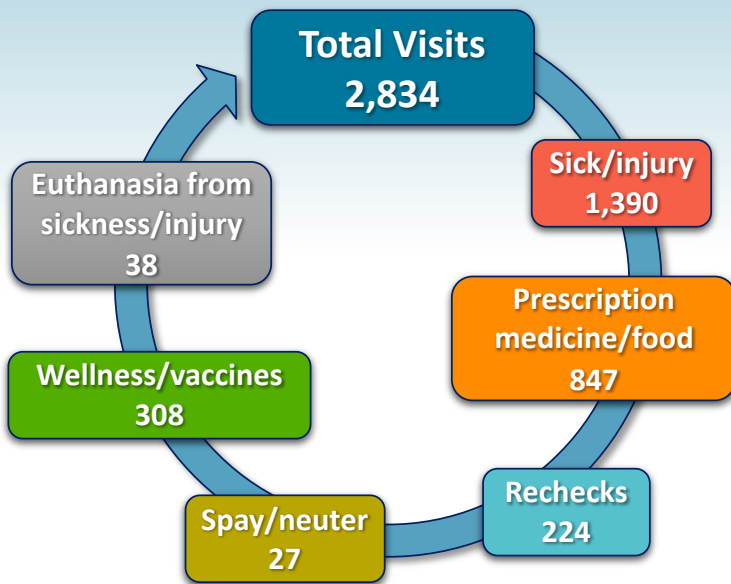
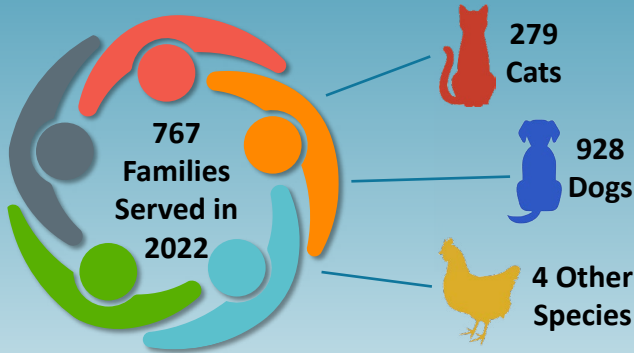


2022 in Review



Families can provide their pets with veterinary care & receive the emotional support needed when faced with a medical crisis involving the pet through Veterinary Social Work. In 2022, AlignCare welcomed our newest Veterinary Social Work Team members.



Augusta O'Reilly, LCSW, VSW, Director of Veterinary Social Work

Augusta is a clinical licensed social worker. She has done work with animal-assisted interventions, advocated for mental wellbeing in the veterinary field, and supported the animal-human bond in her professional field.



Kayla Anderson, MSSW, VSW

Kayla is a master's level social worker. Her experience is in co-hosting workshops around trauma theory and cultural humility for veterinary professionals, staffing a veterinary social work hotline for community members experiencing pet loss, and assisting with the creation of a peer-support application for veterinarians and veterinary support staff where she currently serves as a mental health consultant for volunteers.



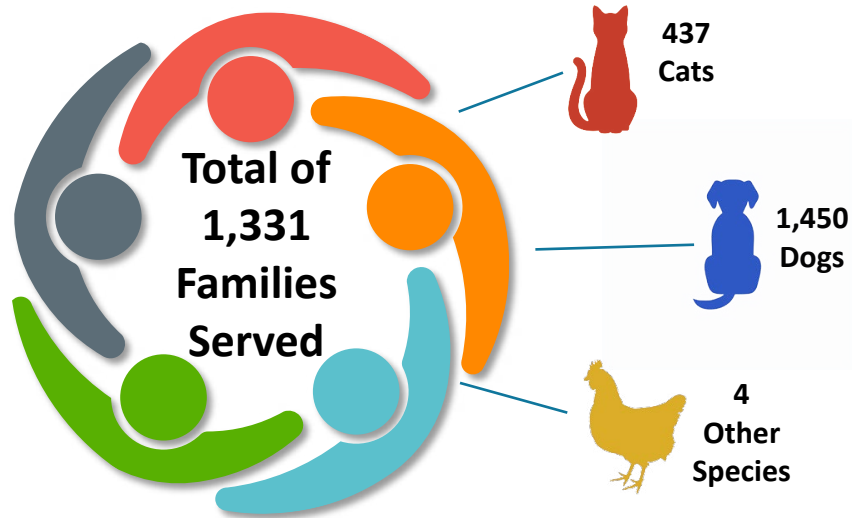
Access to veterinary care is a national family crisis that disproportionately affects low-income families, extending across generations, ethnicities, and genders. AlignCare is a community-based initiative that supports low-income families who previously had difficulty accessing veterinary care by subsidizing veterinary care costs and connecting families with veterinary social workers, social service organizations, animal welfare organizations and veterinary care teams who support them.

AlignCare

Serving Families, Pets and Communities



AlignCare began in April 2020, and since then 12 communities across the U.S. 5,870 veterinary visits totaling \$1,263,632 have been paid by AlignCare, thanks to our partners and sponsors in those communities.



FROM OUR FAMILIES...

"I can't believe what a godsend these programs are," Cory said. "I adopted Truman and his brother after my husband died. The cats gave me and my then three-year-old daughter such love during a difficult time. His brother has since passed, but Truman has been our beautiful cuddly boy for 17 years, and I can't imagine life without him. Everyone was amazingly kind and genuinely concerned. I was talking to actual humans who really understood my plight, and how traumatic it is when your pet is sick, but you are helpless/struggling financially. They gave Truman the medicine he needed, and he is much better and out of pain. My heart is truly appreciative and happy."



"Sammy was hit by a car, and we were not gonna be able to afford the vet, we were gonna surrender him because he had a broke leg and we couldn't afford to get it fixed. Thankfully with Young Williams Animal Center and AlignCare we were able to get him better and we did not have to surrender."



[Watch our latest video to see why AlignCare is so important & how you can help.](#)

If you would like more information or learn how you can help your community, please email us at ppheweb@utk.edu.