

Harmonizing Perspectives: Key Concepts and Principles in the Spectrum of Care



"How do I tell my 10-year-old, non-verbal autistic child that his only companion and source of comfort, his dog, must be euthanized because we can't afford the veterinary care he desperately needs?"



% of U.S. aggregate household income held by lower-, middle- and upper-income households

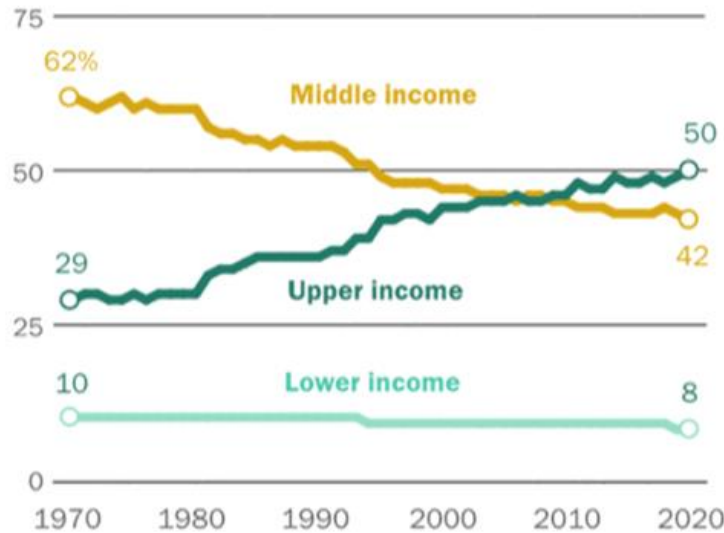
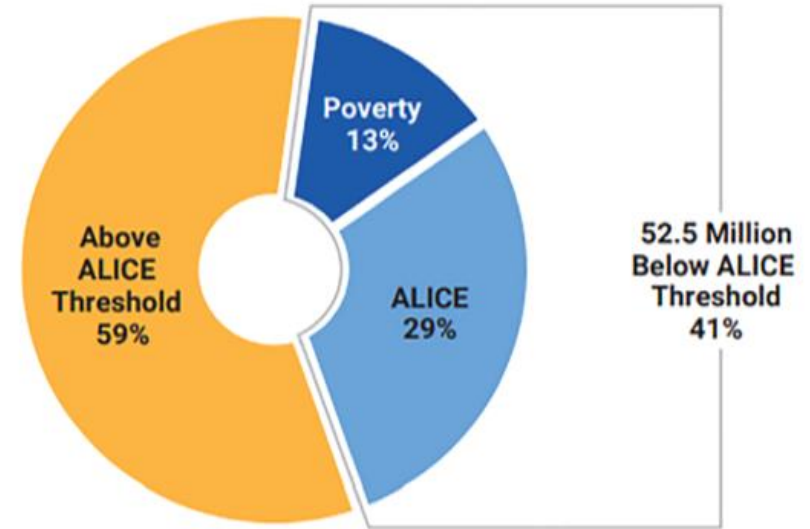
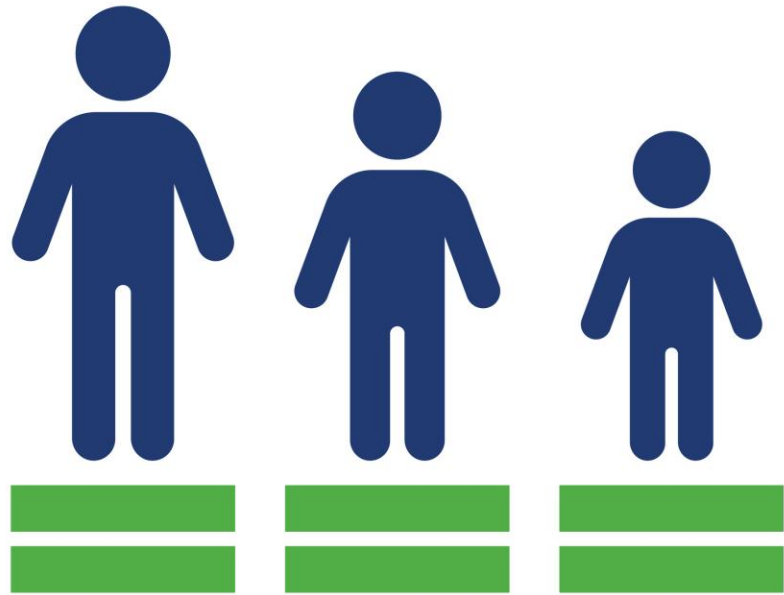


FIG. 2 Share of aggregate income held by US middle class has plunged since 1970. Note: Households are assigned to income tiers based on their size-adjusted income in the calendar year before the survey year. Their unadjusted incomes are then totaled to compute the share of US aggregate household income held by each income tier. Shares may not add to 100% due to rounding. (From Kochhar R, Sechopoulos S. How the American middle class has changed in the past five decades. Pew Research Center. April 20, 2022. Accessed January 5, 2023. <https://www.pewresearch.org/fact-tank/2022/04/20/how-the-american-middle-class-has-changed-in-the-past-five-decades/>. Source: Pew Research Center analysis of the current population survey, annual social and economic supplement (IPUMS).)



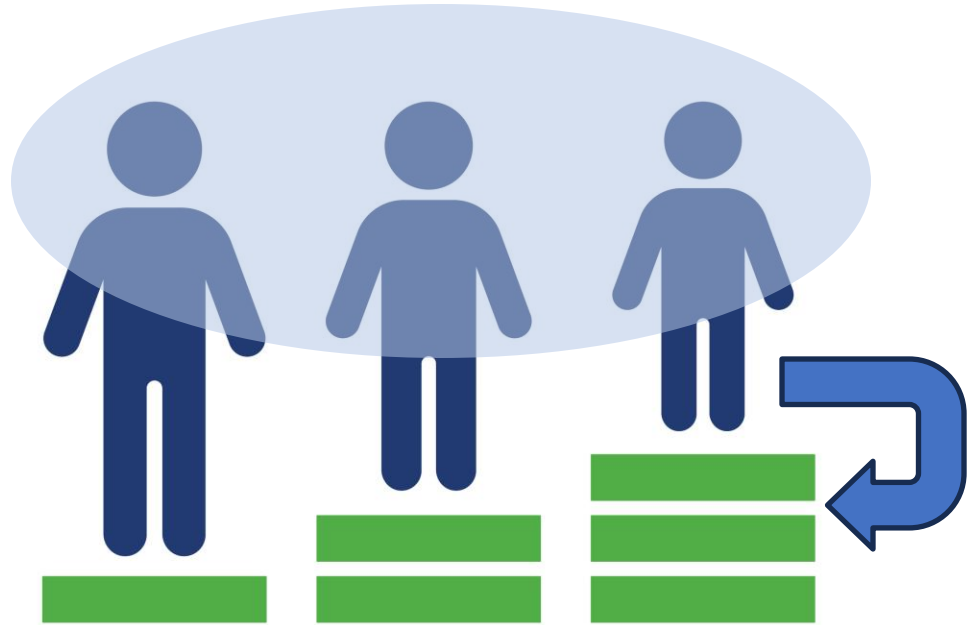
* In the U.S., out of 127 million households, there were 16.2 million (12.8%) in poverty plus 36.3 million (28.6%) that were ALICE, which totals to 52.5 million (41.4%) below the ALICE Threshold and rounds to 41% in this Report.

FIG. 1 Percentage of US Households who are Asset Limited, Income Constrained, Employed (ALICE). (From United for ALICE. *On Uneven Ground - ALICE and Financial Hardship in the U.S.*; 2020:3.)



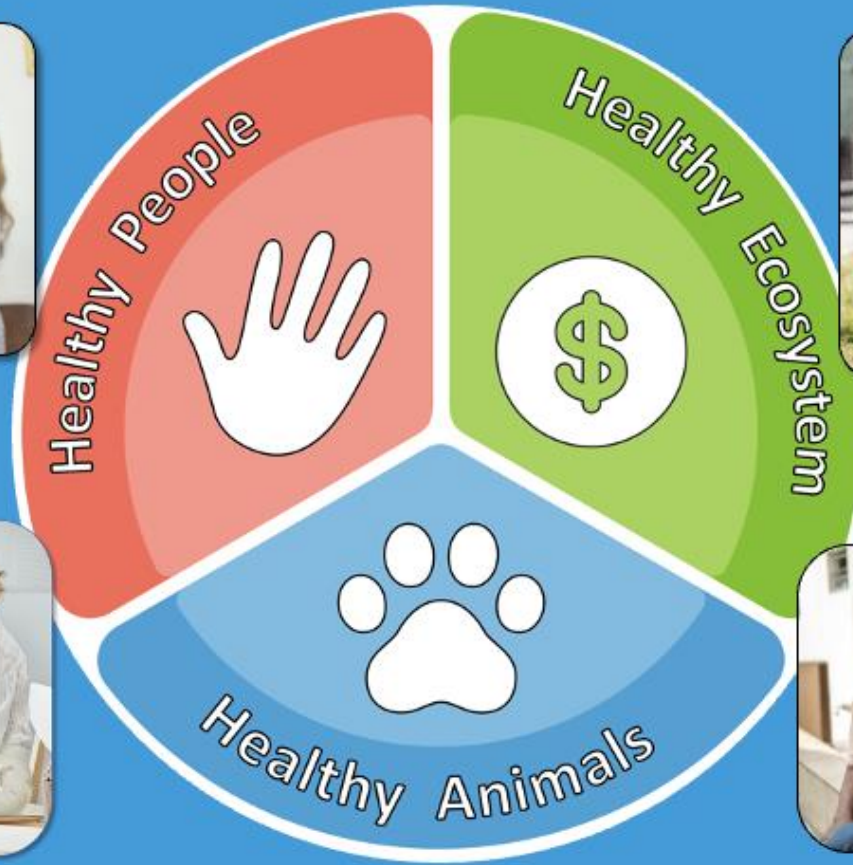
EQUALITY

VS



EQUITY

One Health System



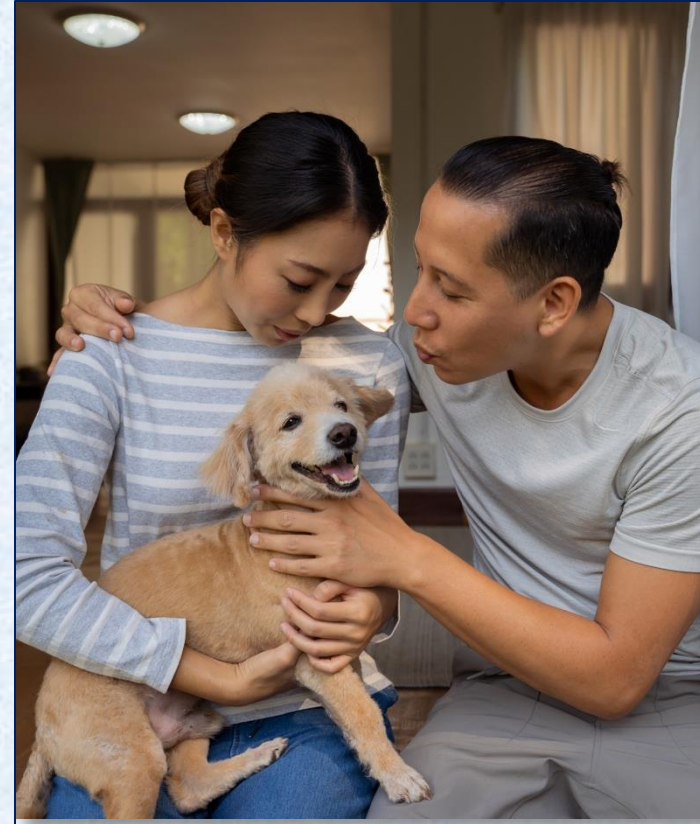
One Health Healthcare System

- **Collaborative Approach Across Disciplines**
 - Veterinary, human healthcare, public health, and social service professionals to address interconnected health challenges.
- **Veterinary Care is a Part of Family Healthcare**
 - Recognizing the human-animal bond as integral to emotional, psychological, and physical well-being plays a critical role in family health.
- **Holistic Family Health**
 - An approach that advocates for a holistic view of family health, addressing the needs of humans and pets to improve overall outcomes.



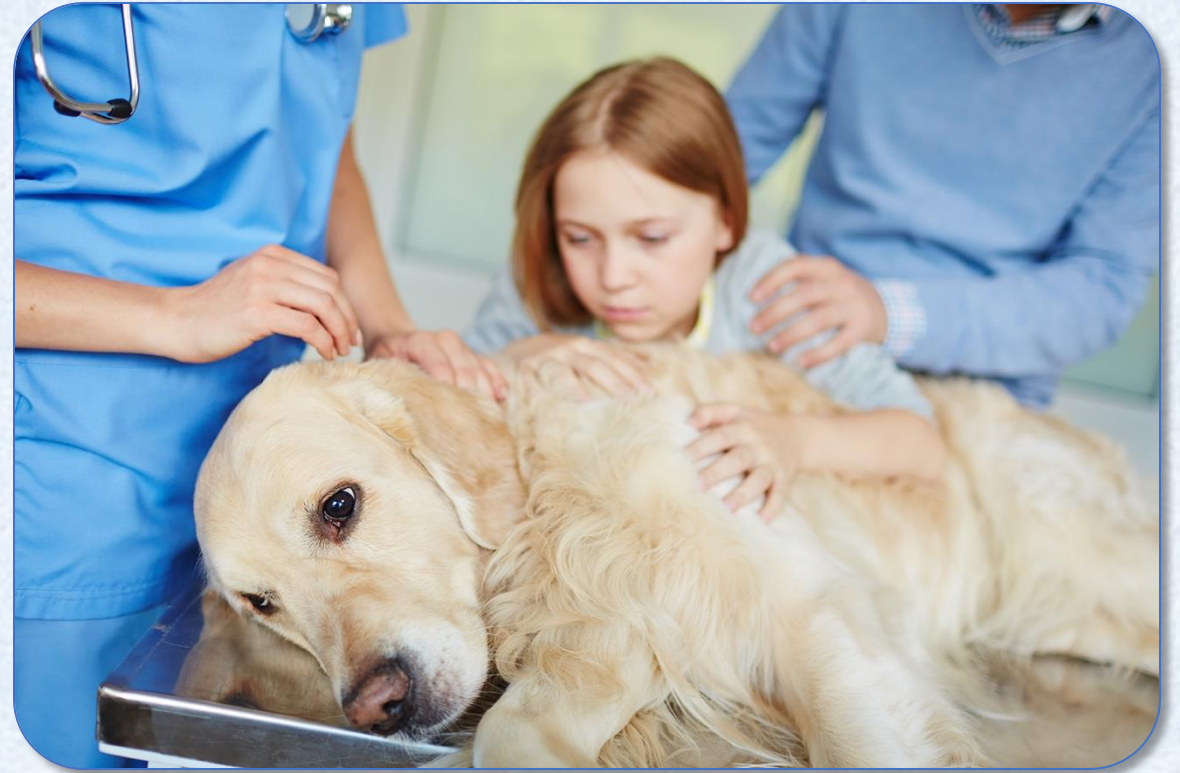
Coordinated Care - Context

- Bonded Family Society
- One Health System for Bonded Families
- Healthcare System Integration
- Community-Based Care
- Health Equity
- Social Determinants of Health
- Access to Care & DEI



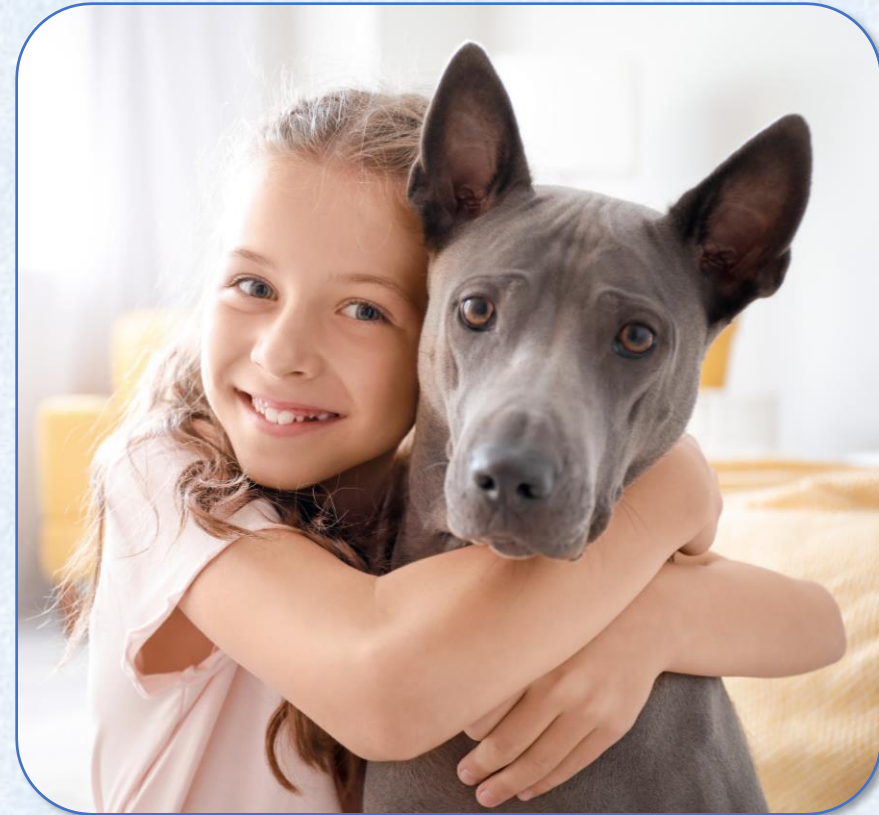
Coordinated Care - Methods

- Spectrum of Care
- Incremental Veterinary Care
- Contextualized Care
- Collaborative Care Models
- Decision-Making Frameworks
- Client Communication and Engagement
- Interprofessional Collaboration



Core Concepts and Principles

- Patient-centric care
- Family-centric care
- Community-centric care
- Health Equity
- Cultural Competency in Care
- Ethical Decision-Making
- Holistic and Inclusive Care Principles



Gold Standard Care is Relative

- **Definition of Gold Standard Care**
 - The highest level of care that is considered the best practice in veterinary medicine, involving the most advanced treatments and technologies.
- **Contextualized Application of Gold Standard Care**
 - Gold standard care should be adapted based on the patient's and family's specific needs and circumstances, recognizing that what is ideal in one situation may not be feasible or appropriate in another.
- **Patient-Centric Considerations**
 - The gold standard is not just about the best possible care but the best care for the individual patient, considering factors like the patient's age, health status, and quality of life.
- **Family-Centric Decision-Making**
 - Decisions about pursuing gold-standard care should also consider the family's financial situation, values, and ability to provide ongoing care, ensuring that the chosen treatment aligns with their capacity and preferences.

Gold Standard Care is Relative

- **Balancing Ideal with Practical**
 - While the gold standard sets an important benchmark, care plans should balance the ideal with what is practical and achievable for each family, ensuring that the care provided is both effective and realistic.
- **Ethical Considerations**
 - Applying gold standard care must include ethical considerations, ensuring that the pursuit of the highest level of care does not compromise the patient's or family's overall well-being.
- **Spectrum of Care Integration**
 - Gold standard care exists within the spectrum of care, which includes a range of treatment options to accommodate different needs and resources, ensuring that every patient receives some level of appropriate care.
- **Incremental Veterinary Care**
 - Exists within the spectrum of care, which includes a range of treatment actions . . .

Clinical Case 1

The patient has been diagnosed with **otitis externa**, which requires regular treatment at home, such as cleaning the patient's ear and applying medicated ear drops.

The guardian is a long-term client dedicated to their pet's health and well-being. However, they suffer from **rheumatoid arthritis**, which severely limits their ability to perform tasks that require fine motor skills, such as treating the pet's ears at home.

Clinical Case 1 – Discussion Questions

How would you adapt the treatment plan to accommodate the client's physical limitations?

What incremental care options could you offer that balance effectiveness with the client's ability to manage the treatment at home or with external support?

How can veterinary medicine collaborate with other healthcare or social service providers to ensure the pet's guardian receives support in caring for their pet while managing their health challenges?